



Waterfall Rogaine

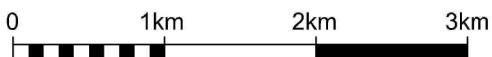
WARA 6 Hour Rogaine. 10th March 2001

WARA is supported by funding from



LEGEND

SCALE 1:50,000, 5 metre contour interval



- Building
- Control 70
- Contours
- Dams
- Hash House
- Magnetic North Line
- Out of Bounds
- Road, Bitumen
- Road, Major Gravel
- Road, Minor Gravel
- Watercourse
- Water Drop W

SETTERS AND VETTERS

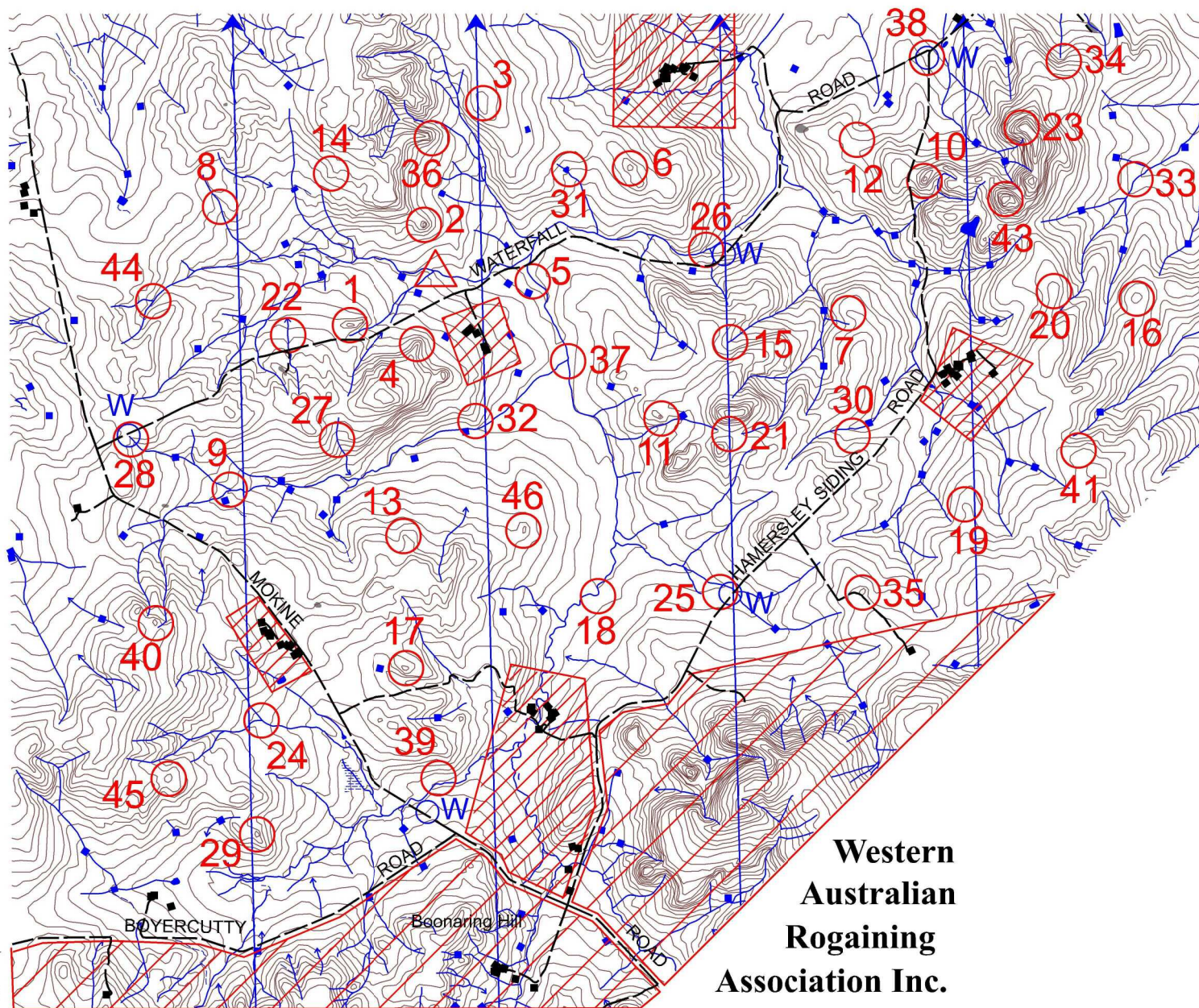
Steve Brown Jim Langford
 Leonie Rennie John Lane

SPECIAL THANKS TO THE FARMERS

A & M Boulton P Manning
 CJ & MJ Chipper JR & LC Curtin
 S & A Chipper RA & GI Ludgate
 R Cheney & W Cheney
 Mrs M H Hamersley

Possession of this map does not give right of entry to this area.

This map was produced using OCAD. Data supplied by DOLA and used under copy licence 393/93. Thanks to David Chiang of DOLA.



**Western
 Australian
 Rogaining
 Association Inc.**

The Waterfall 6 Hour Rogaine. 10th March 2001

No.	Description	Points
1	The knoll	30
2	The summit	30
3	The summit, on a fence	30
4	The spur, on a knoll	30
5	The watercourse	30
6	The knoll	30
7	The spur	40
8	The watercourse, a junction with a fence	40
9	The watercourse junction	40
10	The summit	40
11	The knoll. (Admire the grass tree)	40
12	A lone tree	40
13	The spur, next to a big rock	50
14	The spur, in a boulder cluster	50
15	The gully	50
16	The summit	50
17	The knoll	50
18	The bend in the creek	50
19	The spur, on a roll of wire	60
20	The spur	60
21	The saddle	60
22	The gully	60
23	The summit, broad, north west corner	60
24	The watercourse junction	60
25	A grove of trees, south west corner	70
26	A waterfall, the base of [CAUTION CLIFFS!]	70
27	The watercourse	70
28	The gully, head of	70
29	The knoll	70
30	A windmill	70

No.	Description	Points
31	The dam, east side	80
32	The spur, broad	80
33	The bend in the creek	80
34	The gully, broad, east side	80
35	The knoll	80
36	The spur	80
37	The creek junction	90
38	A gate	90
39	A small grove of trees, north east corner	90
40	The knoll	90
41	The spur, broad	90
43	The summit, on a trig point	100
44	The watercourse junction	100
45	The knoll	100
46	The knoll	100

Important Information

Control Cards
From 1430 Saturday

Briefing
1445 Saturday

Start
1500 Saturday

Finish
2100 Saturday

Hash House
Closed!

Sunset
18:37 Saturday

Moonrise
19:21 Saturday

Late Penalty
10 points per minute
or part minute

Controls Used
45

Total Points
2830

All competitors are advised to carry at least 2 litres of water especially if the conditions are hot

Water Control # 28 : North of Control
 Water Control # 39 : Inside gate south of control
 Water Control # 25 : East of control near road
 Water Control # 38 : Inside gate on Hamersley Road
 Water Control # 26 : East of control, inside gate